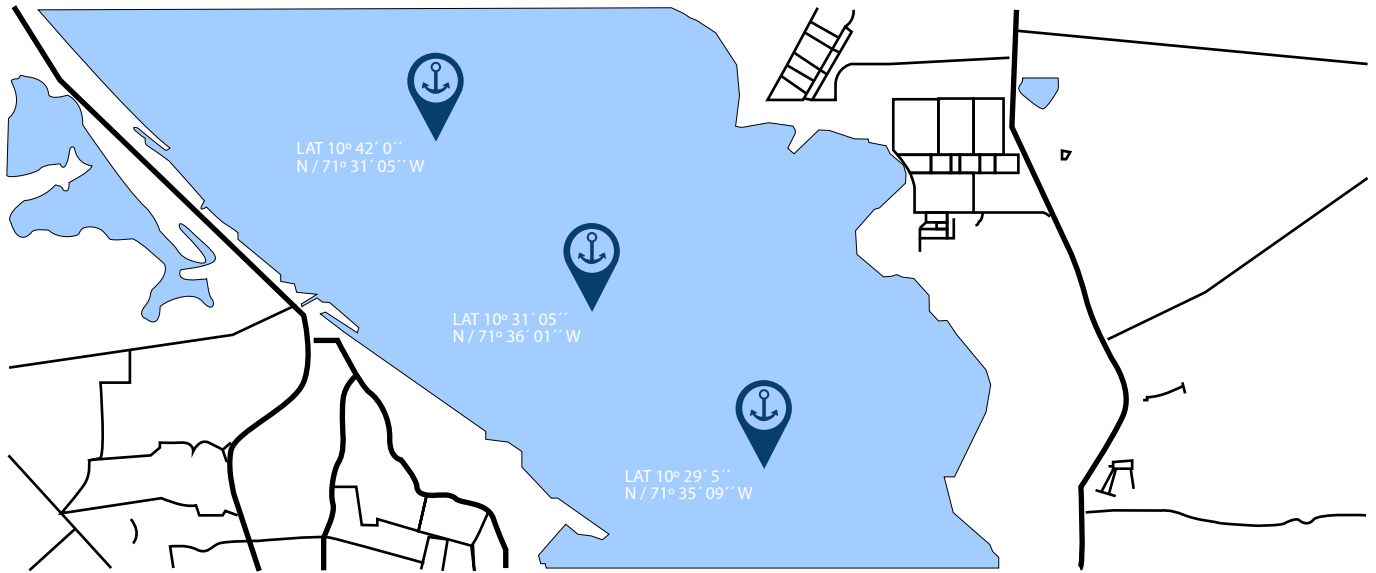


Port Area Layout



General information

OPERATION TYPE
Self Loading

CARGO HANDLED
Coal, Cement, Clinker

PORT OPERATORS
Latinoamericana de Carbon,
Caneveca, Carbones del Zulia

Services

FRESH WATER
Available ex trucks

SHIP'S PROVISION
Available - ship's chandlers must
be hire

BUNKERS
Available - off shore Maracaibo

WATER DENSITY
0.998 – 1,001

VESSEL RESOURCES
Ship's gears, Mooring Lines,
Clamshell (Subject on contract)

DOCKS TO WEIGHT SCALE
Palmarejo / El Bajo: 20min
La Estacada: 2Hrs

UNDERWATER INSPECTION
Available- compulsory

REPAIRS AND STORE
Minors

GARBAGE
Available through the ship
provider

CARGO RATE
8000 - 12000 MT / 24 hrs

SHORE RESOURCE
3 - 5 barges of 1000-1500 MT
C/U weight system,
carqo storage (silos)

OTHER INSPECTIONS
Draff survey, bunker survey, hull
condition, on & off hire bunker
survey, ballast analyzse.

- The official channel draft is set at 10.35 meters
- However, due to the presence of shifting dense mud near the channel exit and strong currents caused by high tides, pilots recommend a more conservative approach, as outlined in the restriction table below

- Vessel sailing with hightide must use tugboats to turn around vessel to be place at channel

Facilities Anchorage	Point N°	MAX LOA	Max Beam	Max Draft at Channel	Max Sailing Draft	Max Airdraft
La Estacada	1	No Restrictions	No Restrictions	10.35 mts (high tide)	10.10 mts / 28 mts beam 10.00 mts/ over 28 mts beam suggested draft by pilots	No Restrictions
El Bajo	3	No Restrictions	No Restrictions	10.35 mts (high tide)	10.10 mts / 28 mts beam 10.00 mts/ over 28 mts beam suggested draft by pilots	42 mtrs (Under Maracaibo Bridge)
Palmarejo	1	No Restrictions	No Restrictions	10.35 mtrs (high tide)	10.10 mts / 28 mts beam 10.00 mts/ over 28 mts beam suggested draft by pilots	42 mtrs (Under Maracaibo Bridge)

